

**Free! Solutions**



1

Contrôlez comment démarrer votre machine sur l'USB (voir tableau au verso)

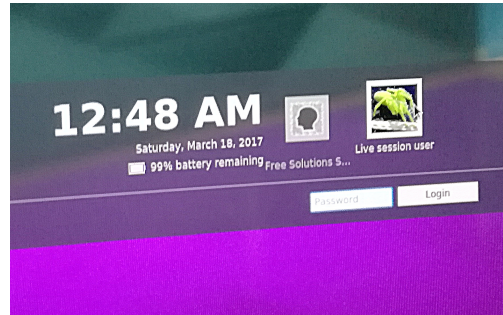


Scannez pour + d'infos



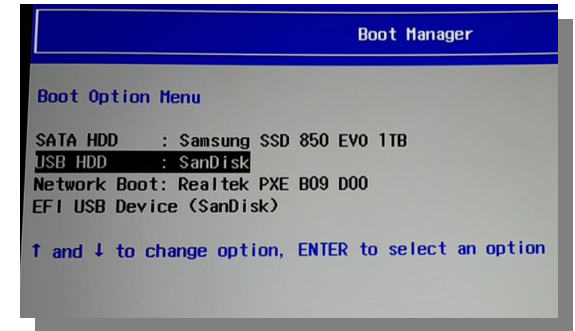
2

Insérez la clef, mettez en marche et appuyez sur la touche (identifiée dans le tableau) pour démarrer sur la clef



3

Connectez-vous en saisissant le mot de passe « 12345678 »



4

Votre PC est prêt !



**Ne jamais retirer la clef USB avant que l'ordinateur ne soit complètement éteint**

Manufacturer	Type	Models	Boot Menu	Boot Once	BIOS Key	Change Priority
ACER			Esc, F12, F9		Del, F2	
ACER	netbook	AspireOne, Aspire Timeline	F12		F2	
ACER	netbook	Aspire v3, v5, v7	F12	The "F12 Boot Menu" must be enabled in BIOS. It is disabled by default.	F2	
APPLE		After 2006	Option			
ASUS	desktop		F8		F9	
ASUS	laptop		Esc		F9	
ASUS	laptop	R503C	F8		DEL	
ASUS	netbook	Eee PC 1025c	Esc		F2	Boot Tab, Boot Device Priority, 1st Boot Device, Removable Device, F10
COMPAQ		Presario	Esc, F9		F10	BIOS "Advanced Tab", Boot Order
DELL	desktop	Dimension, Inspiron, Latitude	F12	Select "USB Flash Drive"	F2	
DELL	desktop	Inspiron One 2020, 2305, 2320, 2330 All-In-One	F12	Select "USB Flash Drive"	F2	
DELL	laptop	Inspiron	F12	Select "USB Storage Device"	F2	Settings->General->Boot Sequence->"USB Storage Device", then up arrow, [Apply]-[Exit]
DELL	laptop	Precision	F12	Select "USB Storage Device" from boot menu	F12	
EMACHINES			F12		Tab, Del	
HP	generic		Esc, F9		Esc, F10, F1	
HP	desktop	Media Center	Esc		F10	BIOS "Advanced" tab, Boot Order, Move "USB Device" before "Hard Drive"
HP	desktop	Pavilion 23 All In One	Esc	Select boot media from the menu	F10	BIOS "Advanced" tab, Boot Order, Move "USB Device" before "Hard Drive". For non-UEFI media, disable secure boot and enable legacy support
HP	desktop	Pavilion g6 and g7	Esc		F10	BIOS "Advanced" tab, Boot Order, Move "USB Device" before "Hard Drive"
HP	desktop	Pavilion HPE PC, h8-1287c	Esc	Then F9 for "Boot Menu"	Esc F10	Storage tab, Boot Order, Legacy Boot Sources
HP	desktop	Pavilion PC, p6 2317c	Esc	Then F9 for "Boot Menu"	Esc F10	Storage tab, Boot Order, Legacy Boot Sources
HP	desktop	Pavilion PC, p7 1297cb	Esc	Then F9 for "Boot Menu"	Esc F10	Storage tab, Boot Order, Legacy Boot Sources
HP	desktop	TouchSmart 520 PC	Esc	Then F9 for "Boot Menu"	Esc F10	Storage tab, Boot Order, Legacy Boot Sources
HP	laptop	2000	Esc	Select "Patriot Memory" on the Boot Option Menu	Esc	
HP	notebook	Pavilion	Esc		F10	BIOS "Advanced" tab, Boot Order, Move "USB Device" before "Hard Drive"
HP	notebook	ENVY dv6 and dv7 PC	Esc	Then F9 for "Boot Menu"	Esc	F10 Storage tab, Boot Order, Legacy Boot Sources
INTEL			F10			
LENOVO	desktop		F12, F8, F10		F1, F2	
LENOVO	laptop		F12		F1, F2	
LENOVO	laptop	IdeaPad P500	F12 or Fn + F11		F2	
NEC			F5		F2	
PACKARD BELL			F8		F1, Del	
SAMSUNG			F12, Esc			
SAMSUNG	netbook	NC10	Esc		F2	Boot Tab, Select "Boot Device Priority", Press Return, Up/Down to Highlight, F6/F5 to change priority
SAMSUNG	ultrabook	Series 5 Ultra and Series 7 Chronos	Esc		F2	Boot Tab, Select "Boot Device Priority", Press Return, Up/Down to Highlight, F6/F5 to change priority
SHARP					F2	
SONY		VAIO, PCG, VGN	F11		F1, F2, F3	
SONY		VGN Esc	F10		F2	BIOS "BOOT" section, "External Device Boot" enabled
TOSHIBA		Protege, Satellite, Tecra	F12		F1, Esc	
TOSHIBA		Equium F12	F12		F12	