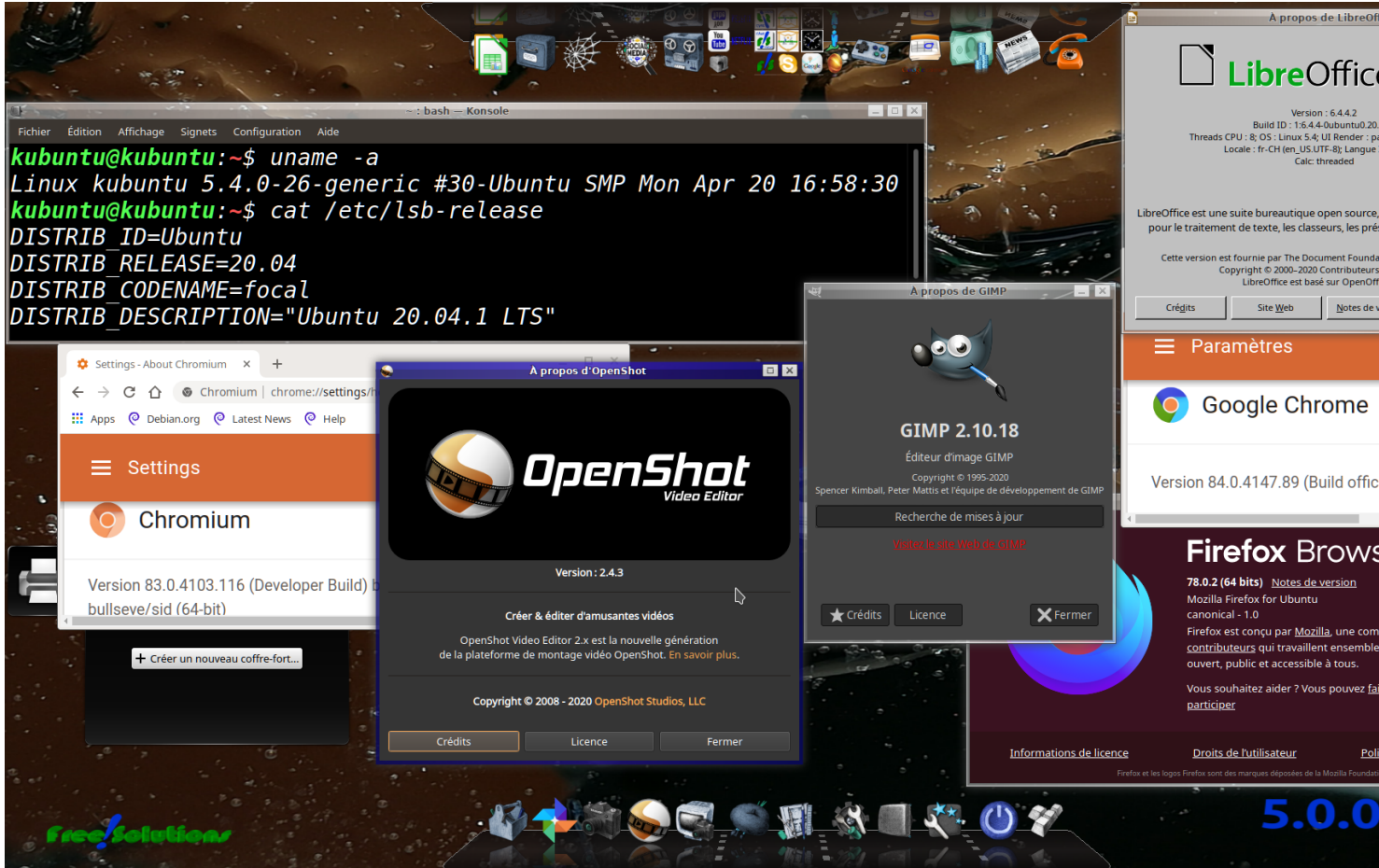


Free-Solutions OS 5.0

Version basée sur Ubuntu 20.04



```
root@kubuntu:~# sync
root@kubuntu:~/home/kubuntu# df -h
Sys. de fichiers Taille Utilisé Dispo Uti% Monté sur
udev                7.8G          0  7.8G   0% /dev
tmpfs               1.6G      1.6M  1.6G   1% /run
/dev/sdb4           2.2G      2.2G    0 100% /cdrom
/dev/loop0          1.7G      1.7G    0 100% /rofs
/cow                20G      5.7G  14G  30% /
tmpfs               7.8G      186M  7.6G   3% /dev/shm
tmpfs               5.0M       4.0K  5.0M   1% /run/lock
tmpfs               7.8G          0  7.8G   0% /sys/fs/cgroup
tmpfs               7.8G      504K  7.8G   1% /tmp
tmpfs               1.6G       12K  1.6G   1% /run/user/999
root@kubuntu:~/home/kubuntu#
```