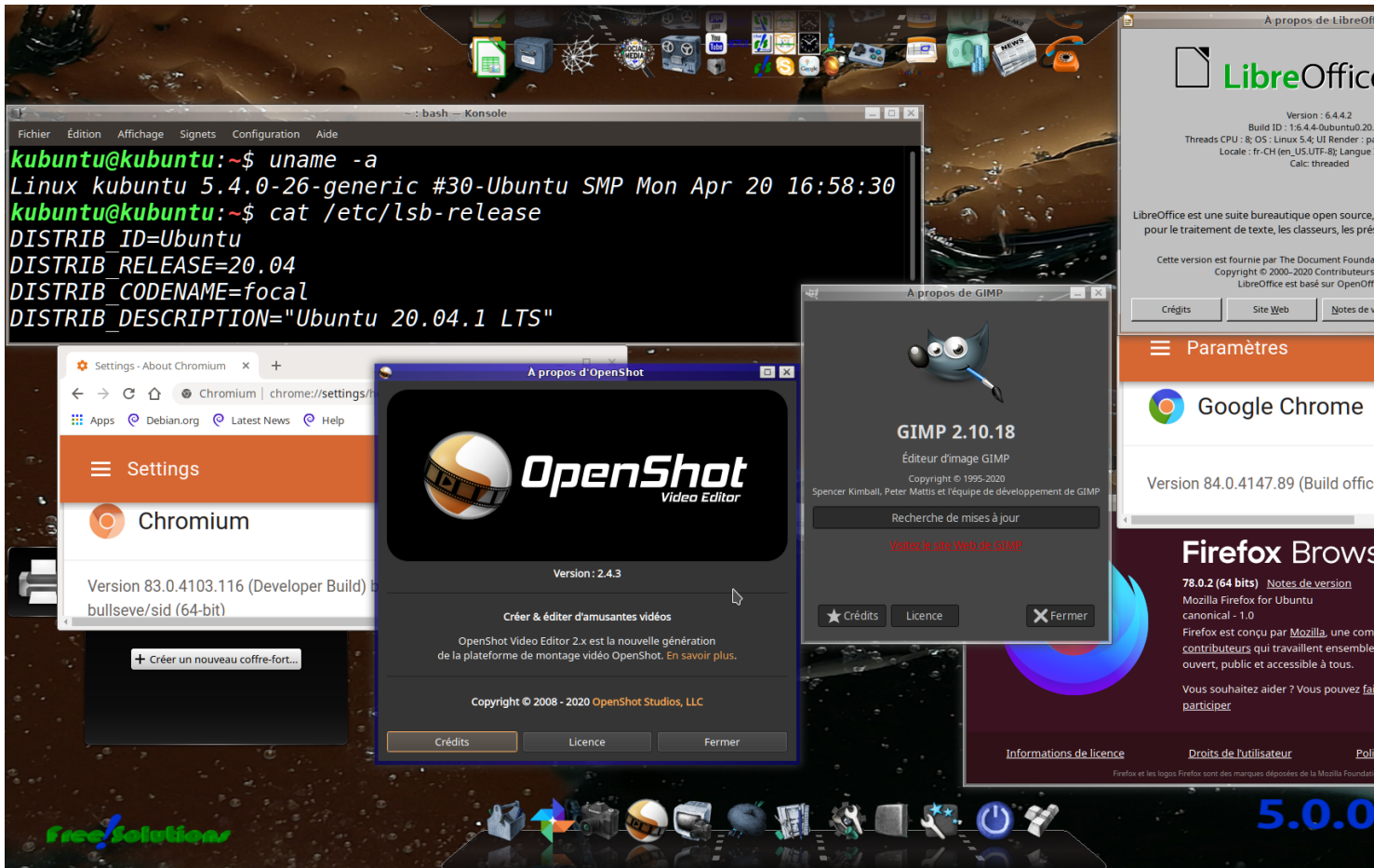


Free-Solutions OS 5.0

Version basée sur Ubuntu 20.04



```
root@kubuntu:~/home/kubuntu# sync
root@kubuntu:~/home/kubuntu# df -h
Sys. de fichiers Taille Utilisé Dispo Uti% Monté sur
udev              7.8G      0  7.8G   0% /dev
tmpfs             1.6G    1.6M  1.6G   1% /run
/dev/sdb4         2.2G    2.2G      0 100% /cdrom
/dev/loop0       1.7G    1.7G      0 100% /rofs
/cow              20G    5.7G   14G  30% /
tmpfs             7.8G    186M  7.6G   3% /dev/shm
tmpfs             5.0M     4.0K  5.0M   1% /run/lock
tmpfs             7.8G      0  7.8G   0% /sys/fs/cgroup
tmpfs             7.8G    504K  7.8G   1% /tmp
tmpfs             1.6G     12K  1.6G   1% /run/user/999
root@kubuntu:~/home/kubuntu#
```